

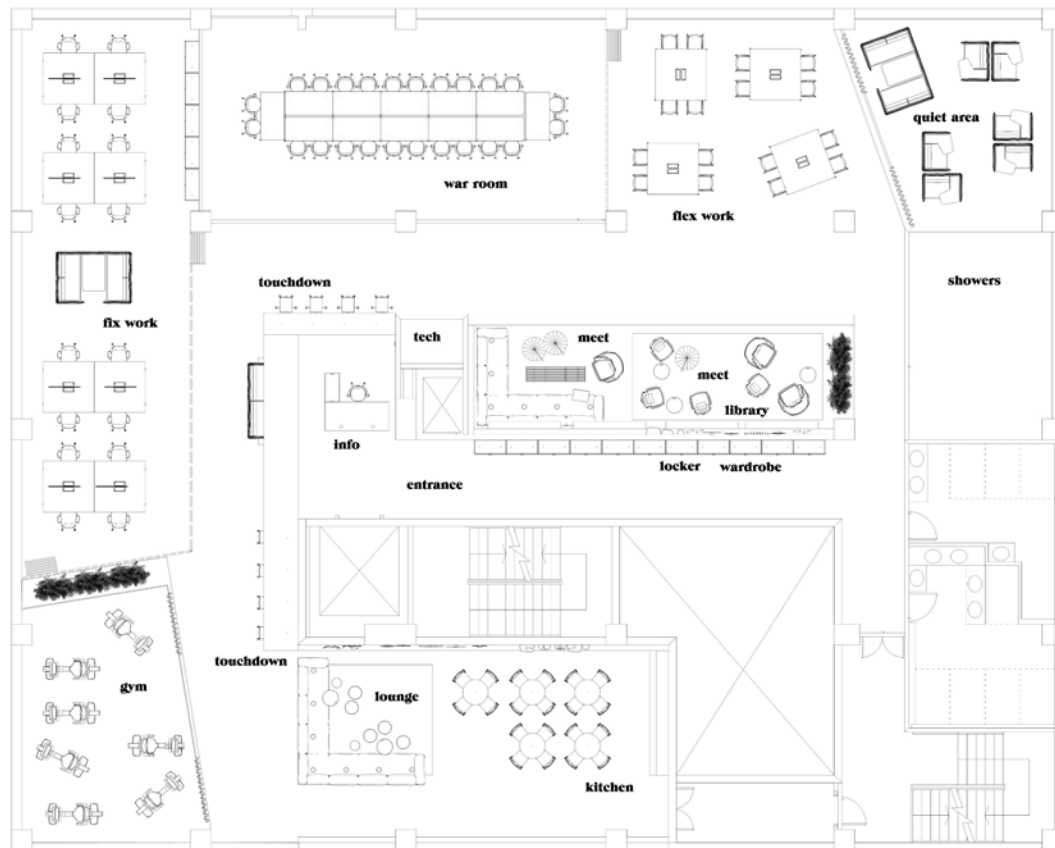
**vitra.**

# Concept Scenarios

# Concept A

# Concept A

traditional\_floorplan



# Concept A

traditional\_floorplan



# Concept A

isometric view



# Concept A

kitchen / gym



# Concept A

lounge / library





# Concept A

war room / flex work / quiet area



# Concept A

key product:

**ALCOVE FAMILY**

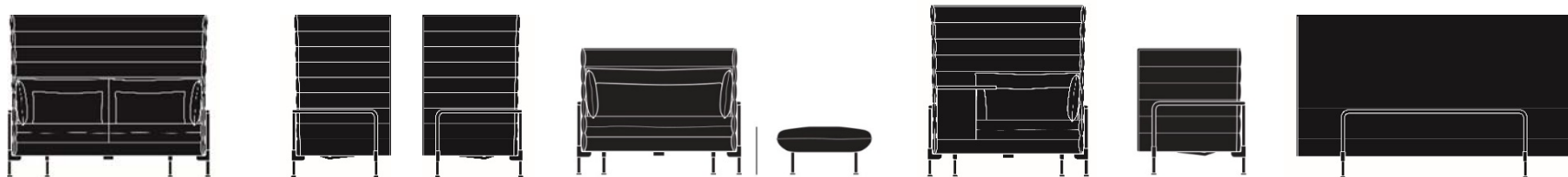


# Alcove Family

## Ronan & Erwan Bouroullec

The "room within a room" is a concept Vitra has been working on for some time now with the designers Ronan and Erwan Bouroullec. The idea of mobile, micro-architectural elements has initiated a number of different designs, the most remarkable of which is the Alcove Sofa. It was designed for the open-plan office, where it offers employees a comfortable, upholstered niche which protects them from the hectic goings on around them. This makes it the perfect place to retreat to for concentrated work or meetings in small groups.

The members of the Alcove Sofa Family can be easily combined and create a versatile set of options for dividing open office landscapes without permanent fixtures. This makes it possible to set up entire central areas within open-plan offices - for meet & retreat - with a uniform aesthetic.



# Alcove Family

Ronan & Erwan Bouroullec



# Alcove Family

Ronan & Erwan Bouroullec



# Alcove Family

Alcove on castors

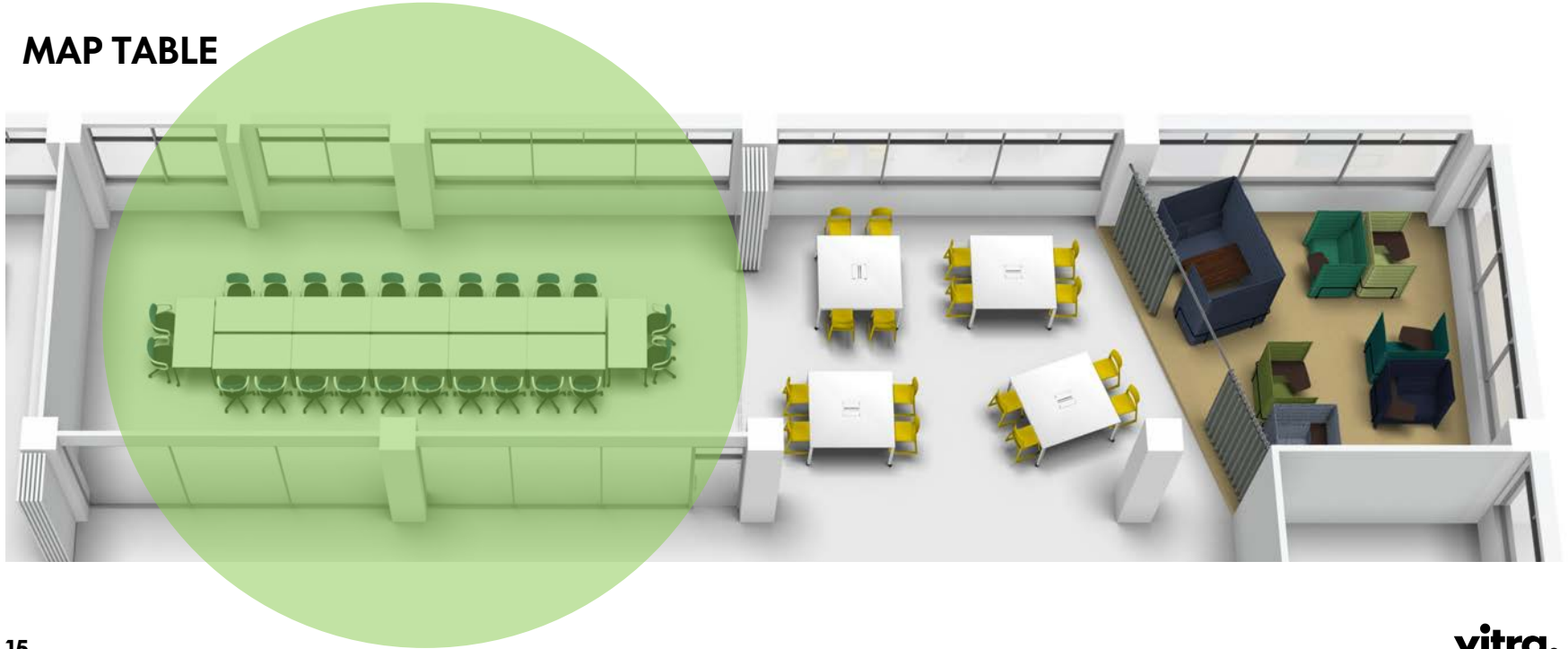




# Concept A

key product:

MAP TABLE



# MAP Table

Edward Barber & Jay Osgerby





## Circular

Map Table round for use as a stand-alone table, available in two sizes.



## Square

Map Table square for use as a stand-alone table or for linking to the table tops square, rectangular and trapezoid; available in widths of 60 and 75 cm.



## Rectangular

Map Table rectangular for use as a stand-alone table or for linking to the table tops rectangular, square and trapezoid; available in widths of 60 and 75 cm. Map Table is also available in the dimensions 1500 x 750 mm as a home desk version in veneer.



## Trapezoidal

Map Table trapezoid for use as a stand-alone table or for linking to the table tops trapezoid, square and rectangular; available in widths of 60 and 75 cm. The table tops have an angle of 60°.





## Brakeable castors

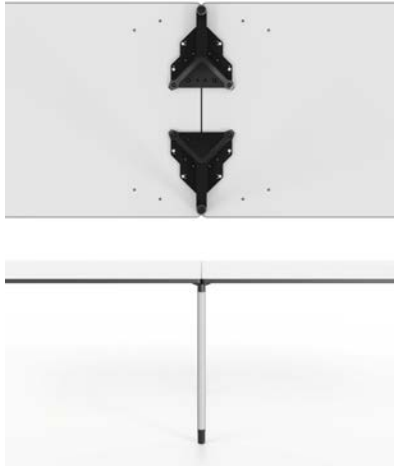
The rectangular and square tables can be fitted with a maximum of two castors. By the use of castors, the tables can be flexibly rearranged by one person and it is easier to stack them. The basic dark castors have a diameter of 50 mm.



## Glides

The basic dark plastic glides are designed to level out uneven floors by up to 1.5 cm. Optional stick-on felt rings included.

The column bases hold two table tops and increase the stability of the configuration by a fixed connection of the tables. This is an elegant solution for reducing the table legs. Can be used with Map Table rectangular, square and trapezoid.



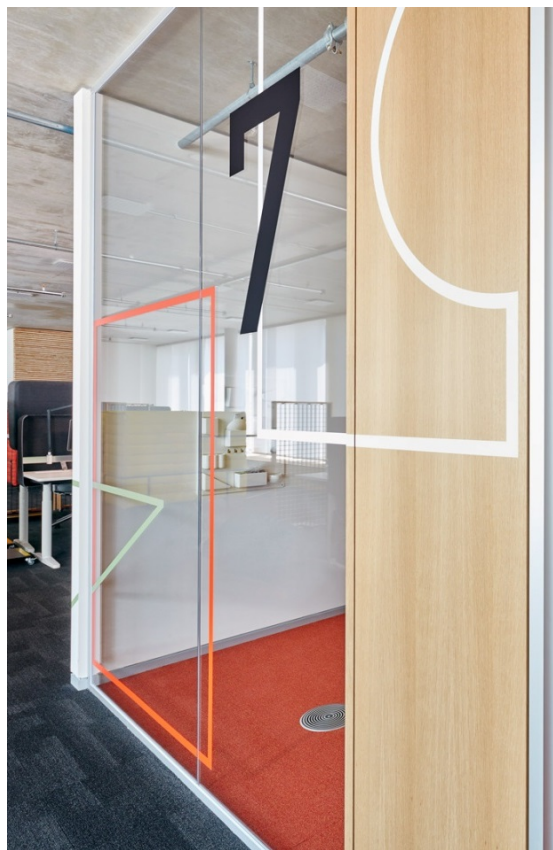
The column bases are slightly pushed in on one table side and on the other side mounted to overhang the table edge. This sleeve function holds Map Table in position and enables the stacking of up to five tables. Can be used with Map Table rectangular and square.



The column bases are mounted flush to the table top. Map Table can be flexibly used and table connectors prevent the configurations from sliding apart.





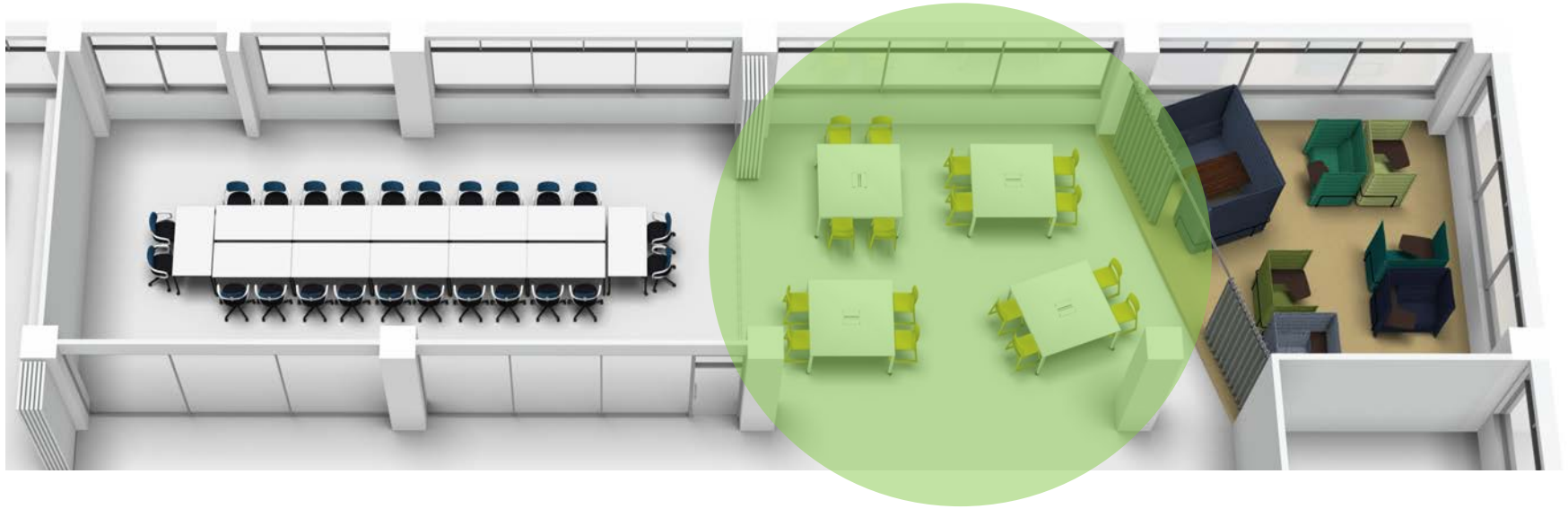




# Concept A

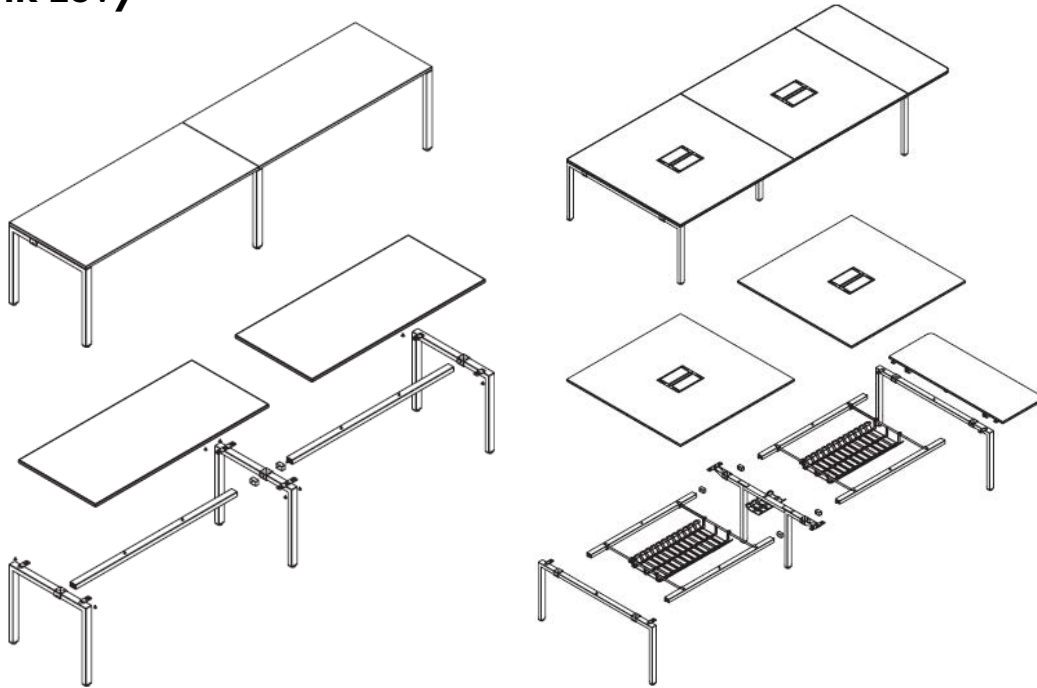
key product:

**WORKIT**



# Workit

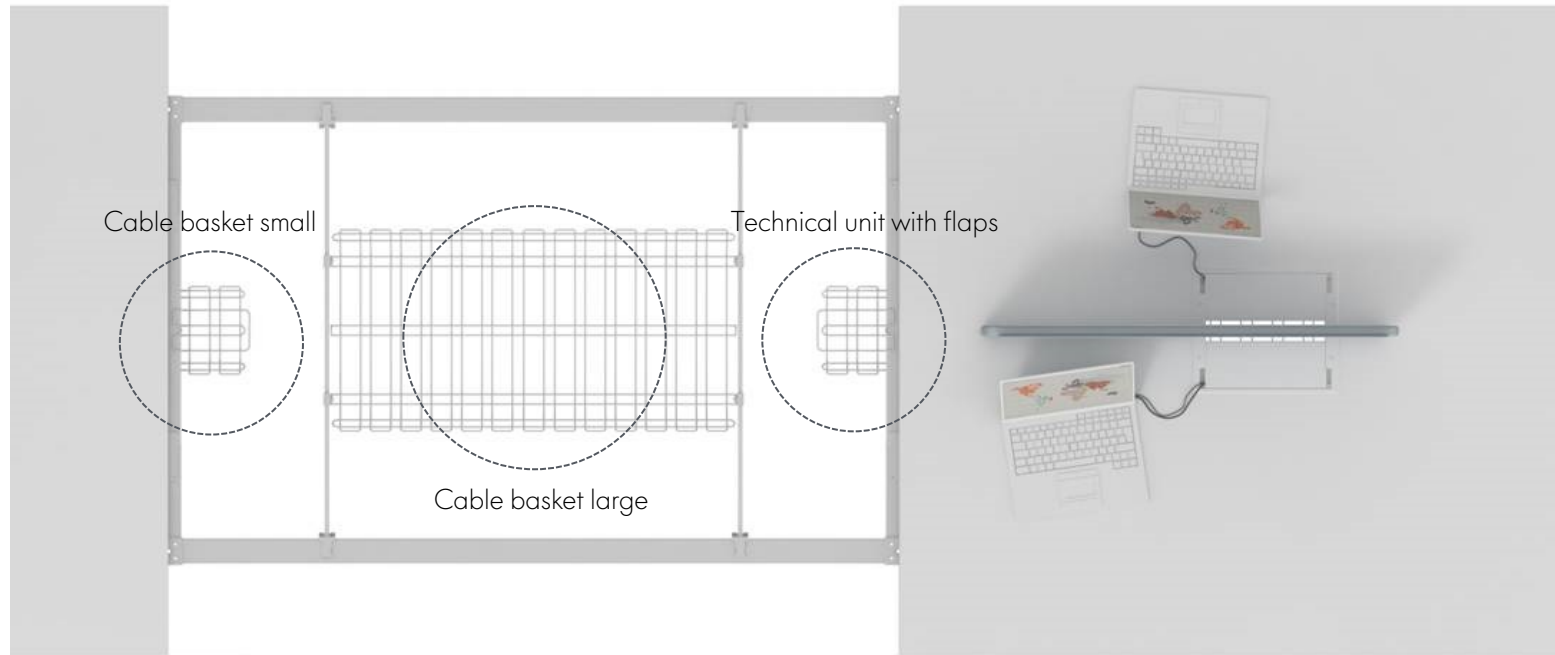
Arik Levy



**Simplicity**

...simply to enlarge.

## Functionality – Cable Management







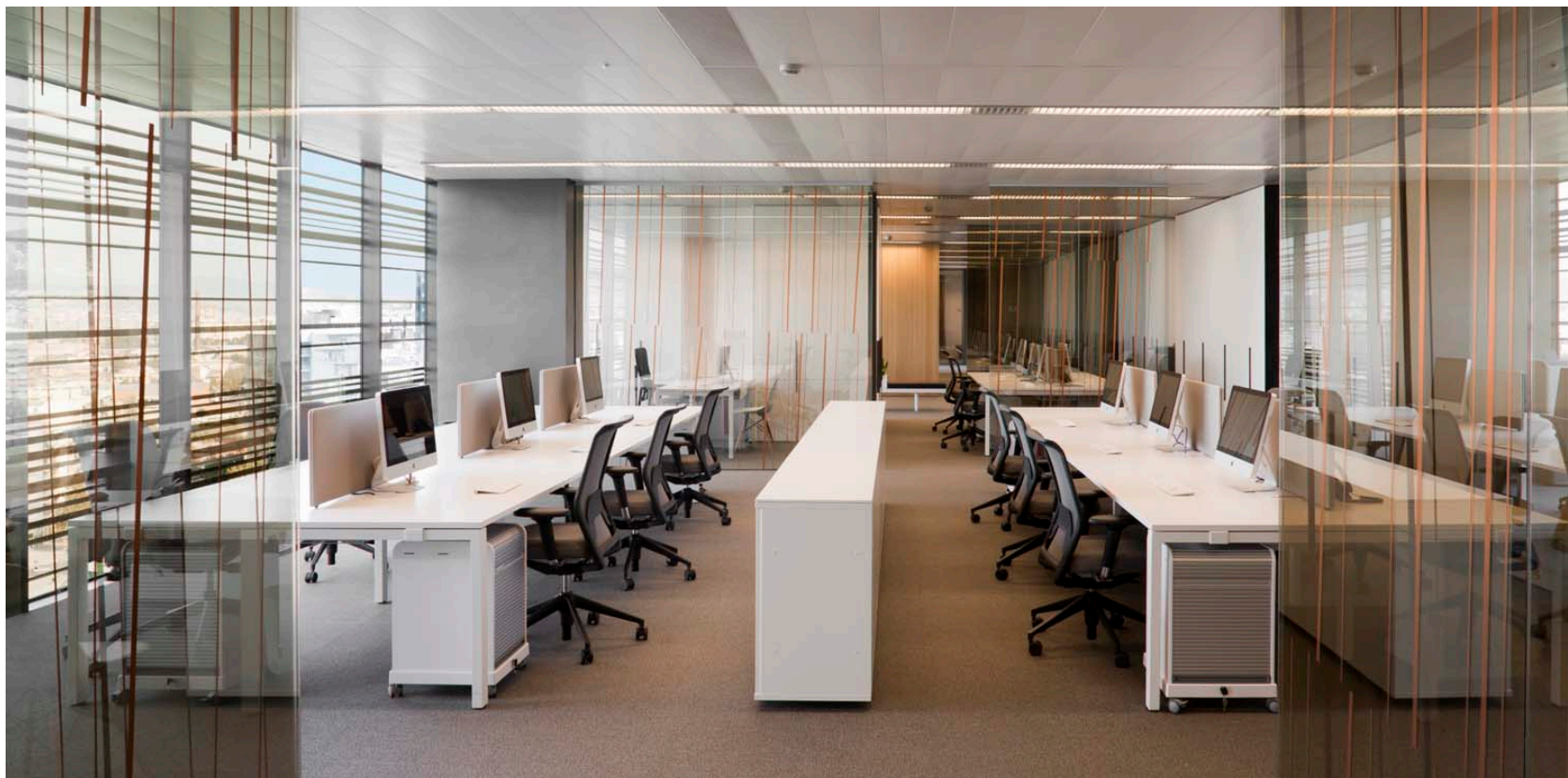








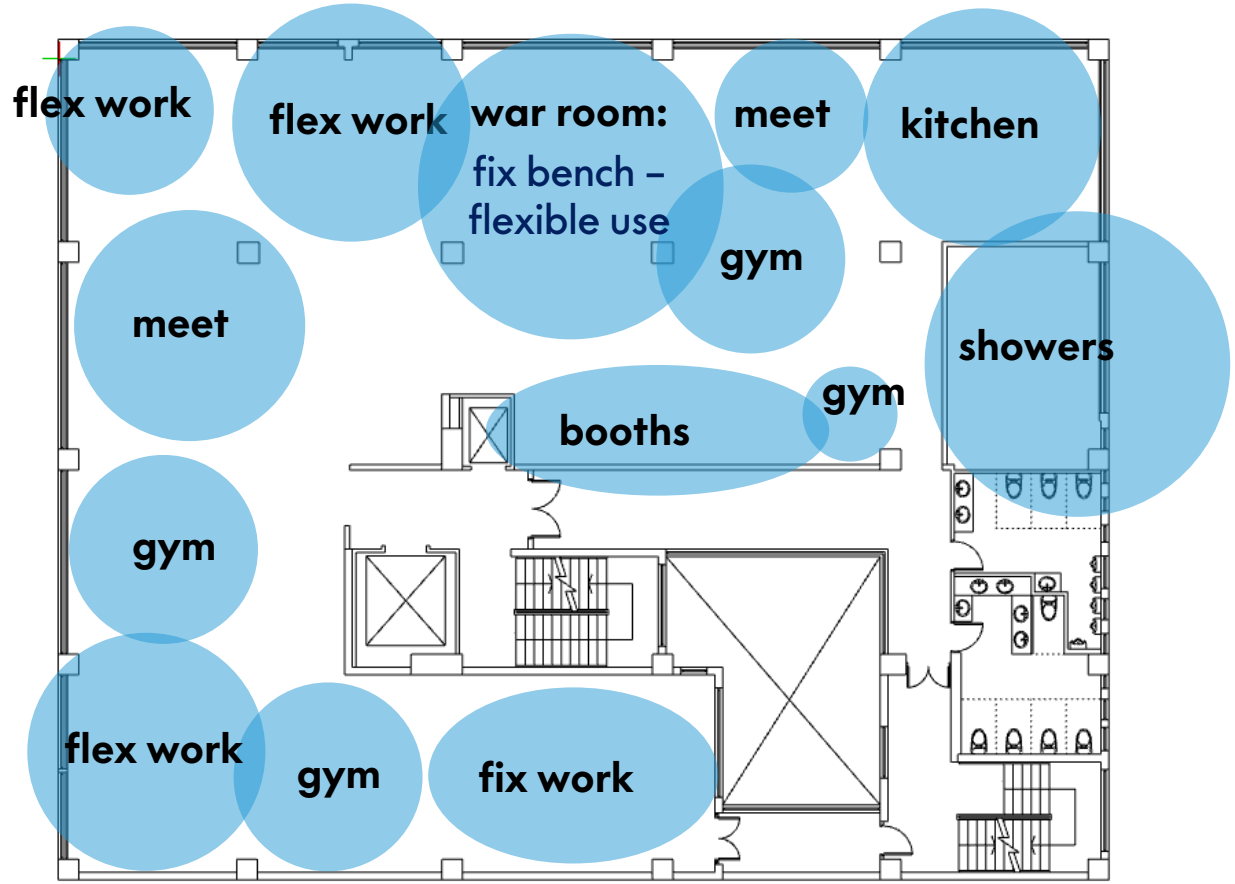




# Concept B

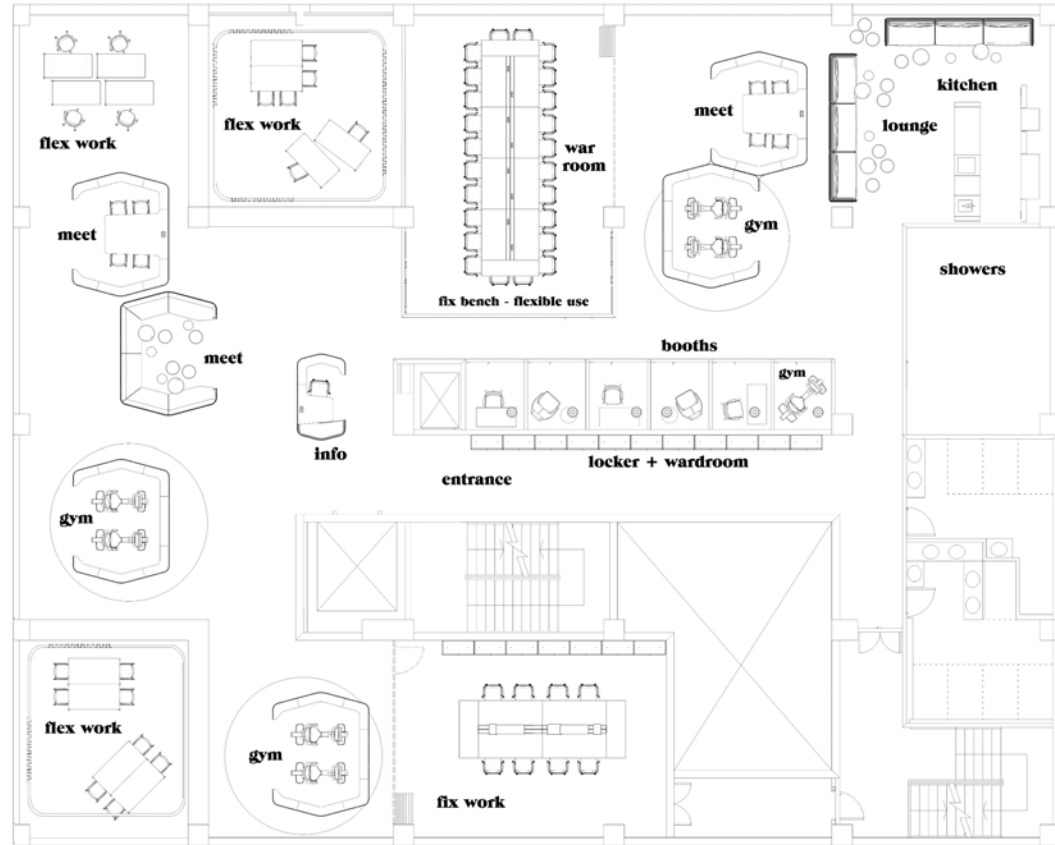
# Concept B

moderate



# Concept B

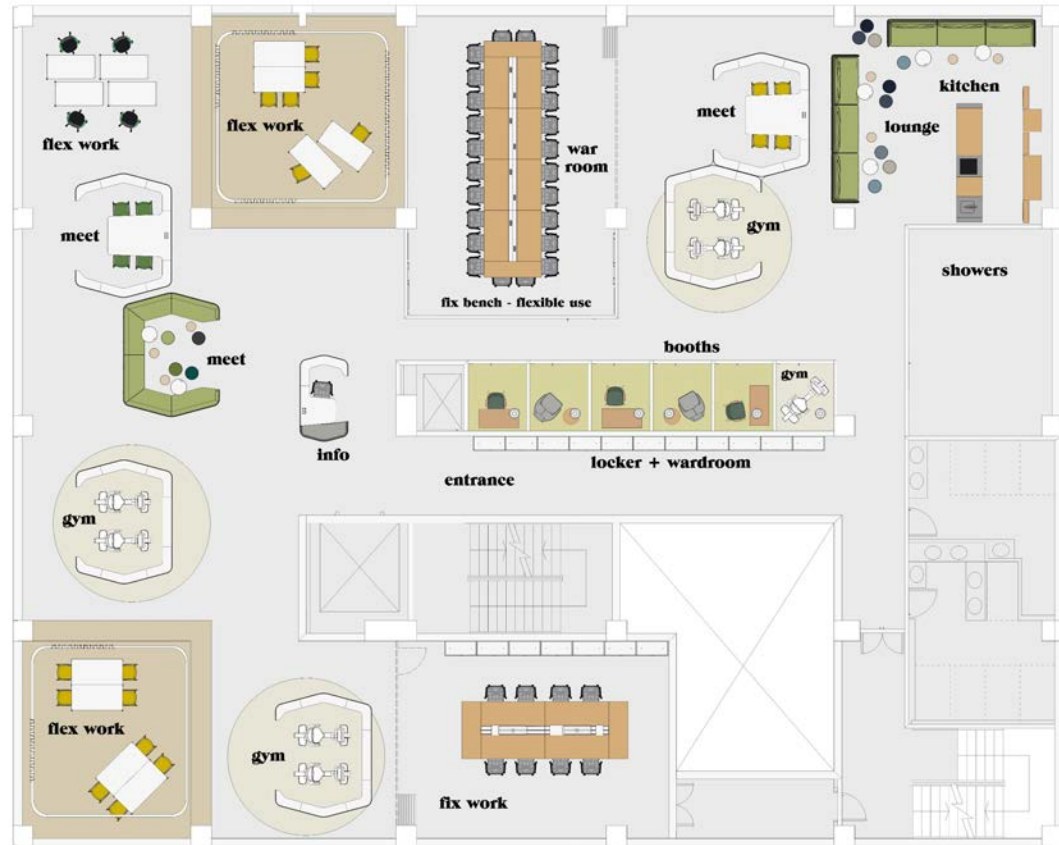
moderate\_floorplan





# Concept B

moderate\_floorplan



# Concept B

isometric view



# Concept B

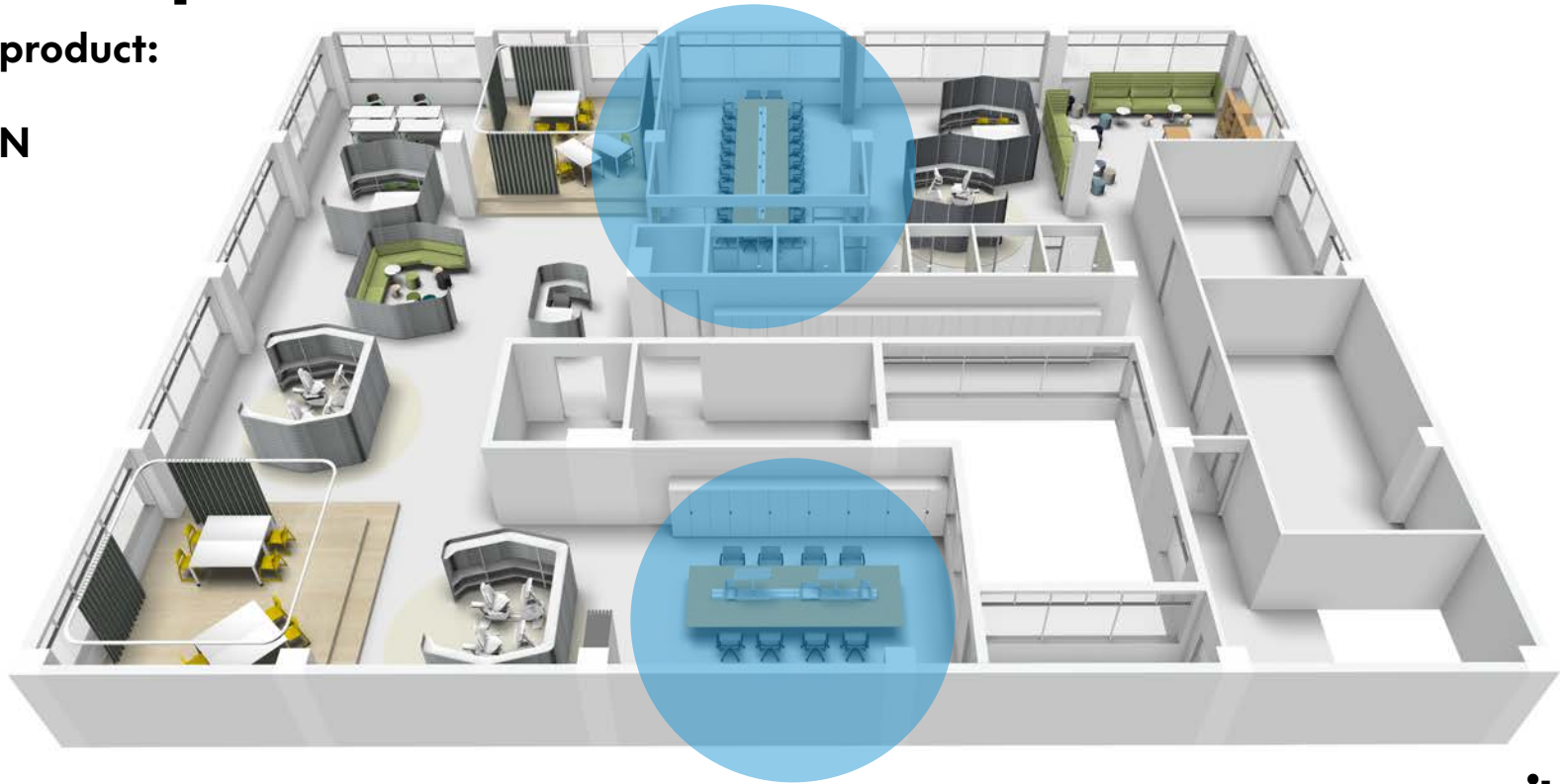
war room / booths / meet / gym / kitchen



# Concept B

key product:

JOYN



# Joyn

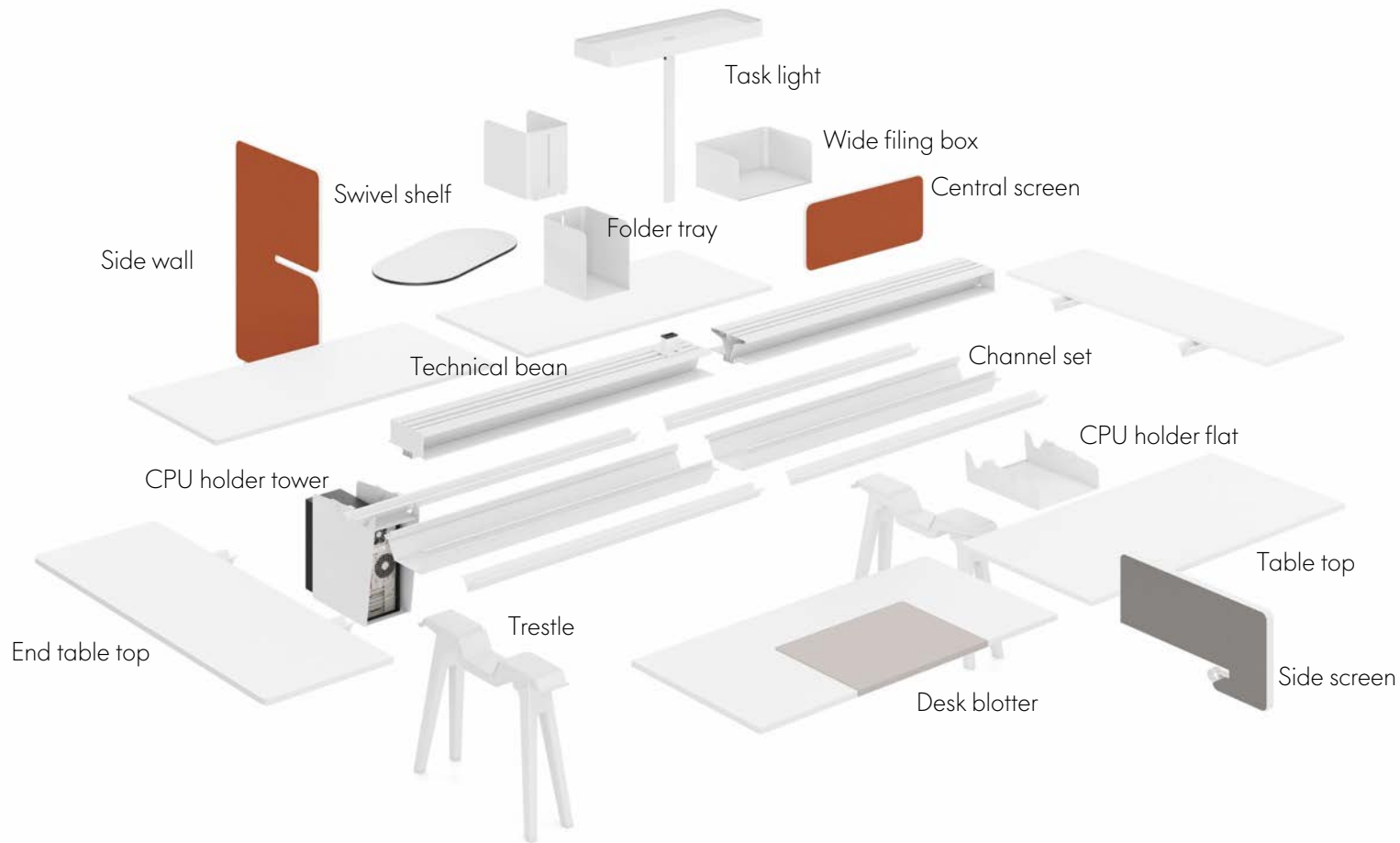
Ronan & Erwan Bouroullec



Joyn is more than just office furniture. Joyn is a management instrument in an era of a changing work culture because Joyn combines a variety of room functions on one single level: the platform. Its mobile and modular structure spontaneously adapts to the changing requirements and technologies. Joyn reflects the dynamism of the modern office. The room for every workstation is given flexibility.

On this basis Joyn gives office planning brand-new perspectives. One and the same configuration support both a high and a low usage density.

The useful accessories, as well as the cleverly designed electrification and cable management solutions, make Joyn a highly flexible system that can be easily reconfigured time and again. Single Desk, Single and Conference Bench or micro-architectural additions complete the range.





**Desk blotter made of foamed polyurethane, with catch to prevent slipping, in basic dark or mauve grey.  
Dimensions: W 500 x D710 mm**



**Central organising tools, prepared for attaching to the multifunctional covers. The file boxes are made of mm sheet steel with textured powder coating in soft light.**



**Central swivel shelf, prepared for attaching to the covers of the cable channels. HPL filing tray ( 12 mm), white with black edge and a swivel tray holder.**



**Screen with pin board for lateral separation of individual workstations. Core material made of high-density tri-ply high grade fireboard (conforms to EN 312) in the thickness FPY 24. Both sides fabric-covered and fixed. Circumferential platform edge made of plastic.**



**Screen with pin board for lateral separation of individual workstations. ABS as the base and core material for the lateral screen. Both sides fabric-covered and fixed.**



**Wall with pin board for lateral separation of individual workstations. OSB (Oriented Strand Board) core material covered and glued on both sides with fabric.**







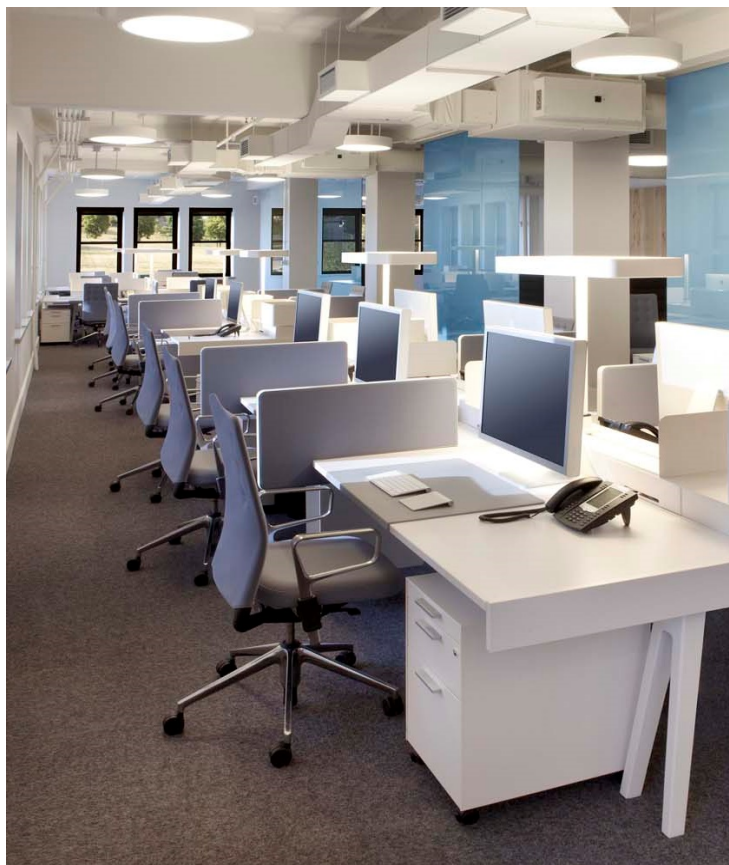








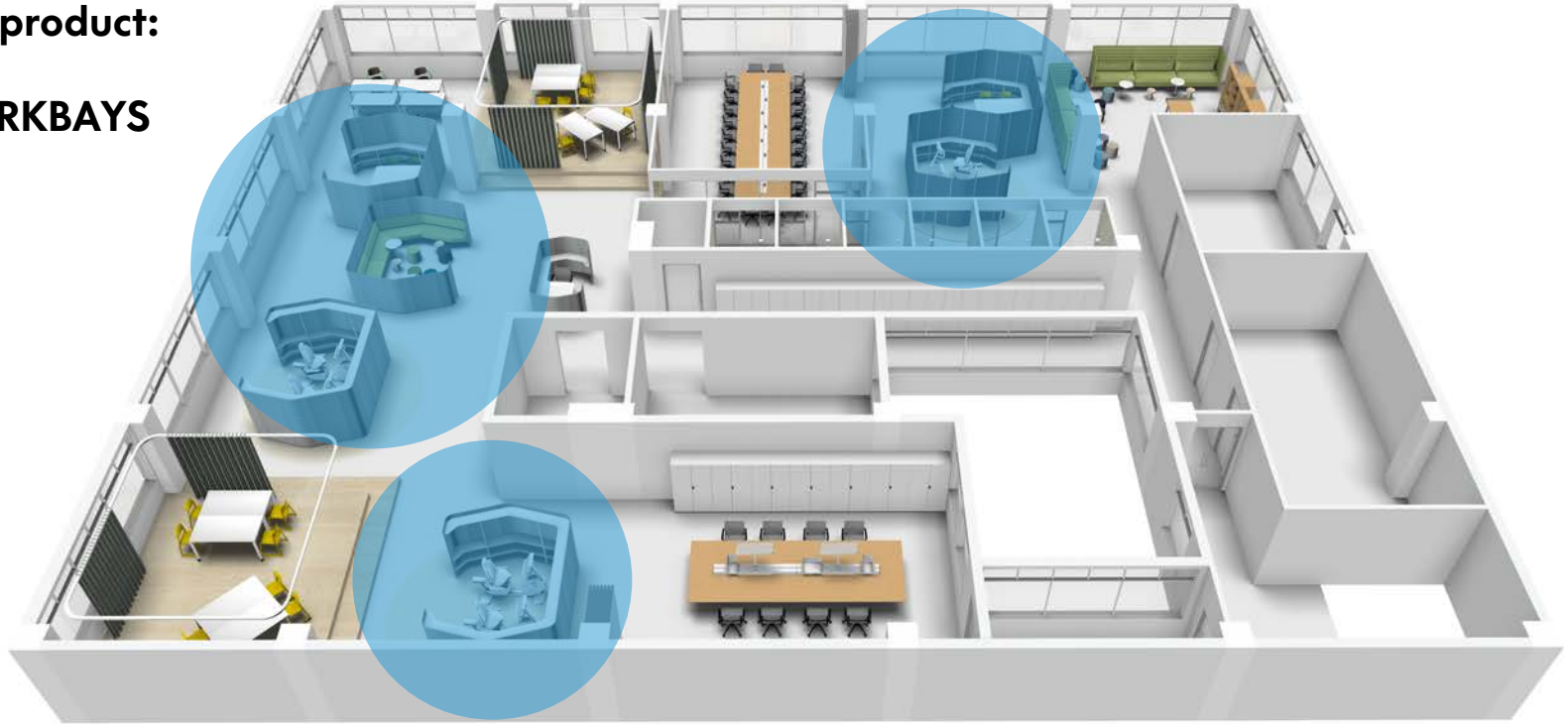




# Concept B

key product:

**WORKBAYS**



# Workbays

**Ronan & Erwan Bouroullec**

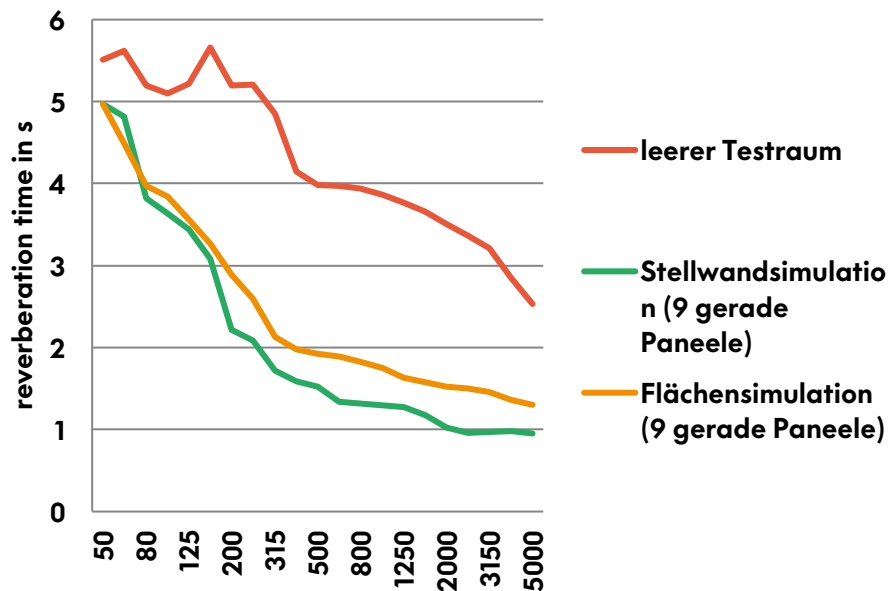
**Workbays incorporate and support today's common diversity in our work. They link the demand of a functional furniture with homelike esthetics.**

**With various products for retreat, communication or getting together they become spontaneously a telephone booth, a video conference room, a reading corner or a meeting room – without having to banish participants to a closed room.**

**As their users Workbays can adapt to changing situations. The system can be extended, adjusted and repositioned as necessary.**

# Workbays

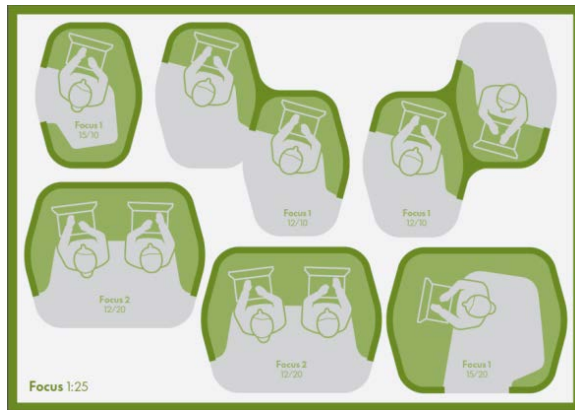
Acoustics simulation Workbays



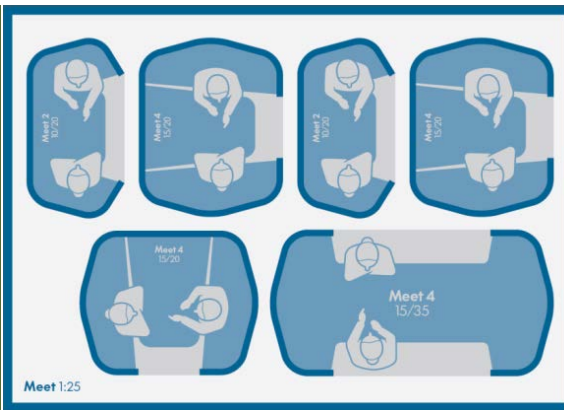
Despite their only slight thickness (12 mm), straight polyester fleece elements cut perceived reverberations in a room by around 50%, thus falling into sound absorption class D.

Because of their organic shape and depending on configuration, entire Workbays installations cut noise even more thanks to additional upholstering elements.

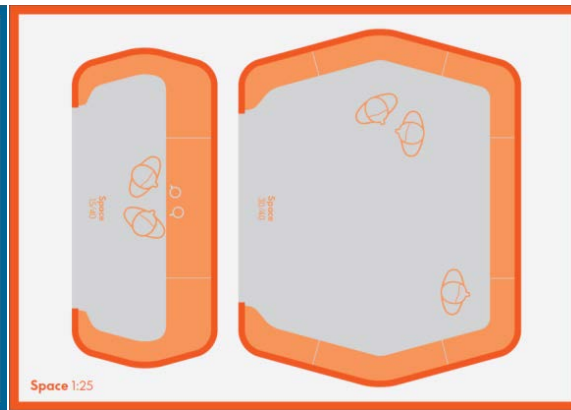
# Workbays



**Focus**  
Retreat areas for focused work



**Meet**  
Meeting rooms on minimal space



**Space**  
Functional gathering points



# Workbays

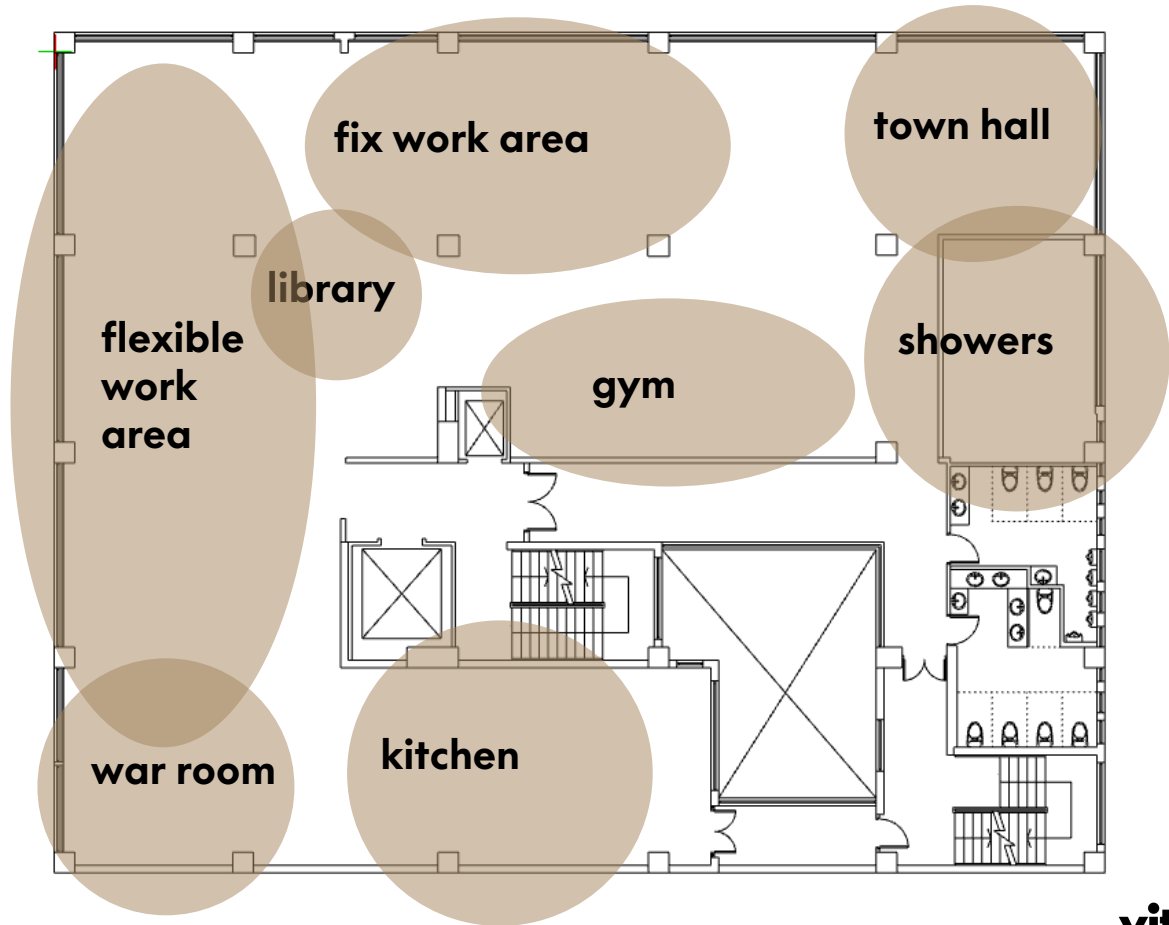




# Concept C

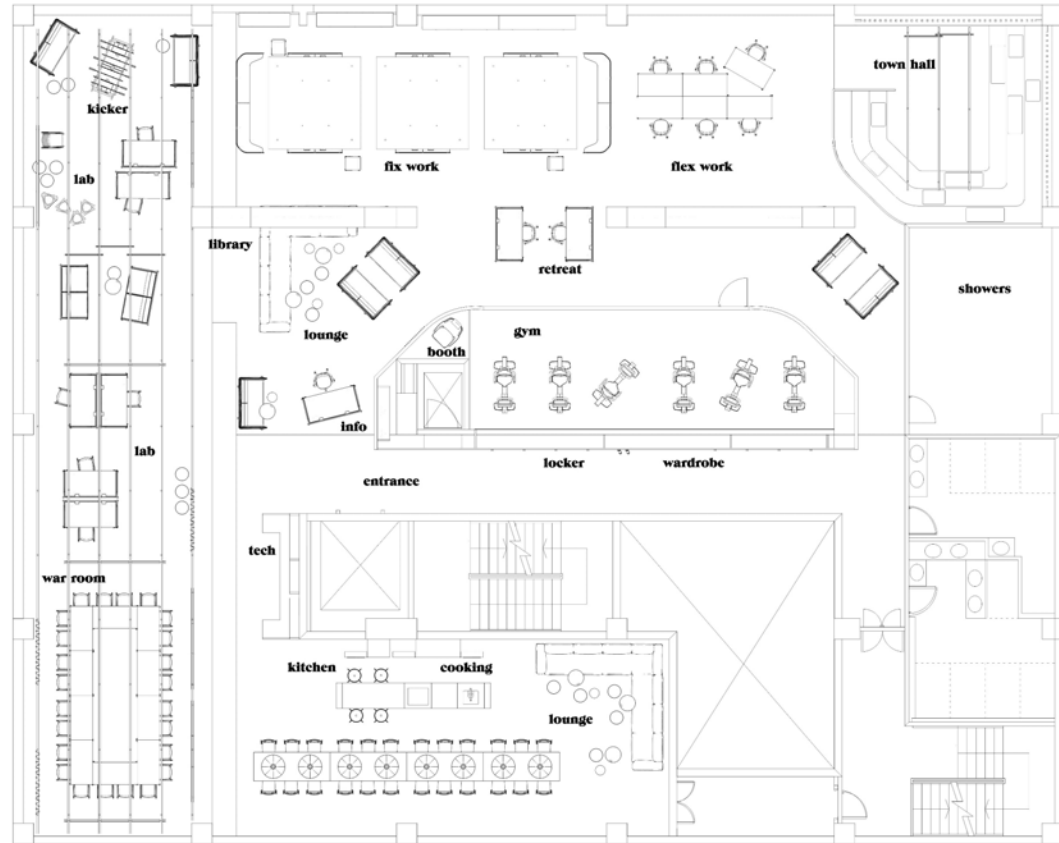
# Concept C

agile



# Concept C

agile\_floorplan



# Concept C

agile\_floorplan



# Concept C

isometric view



# Concept C

isometric view





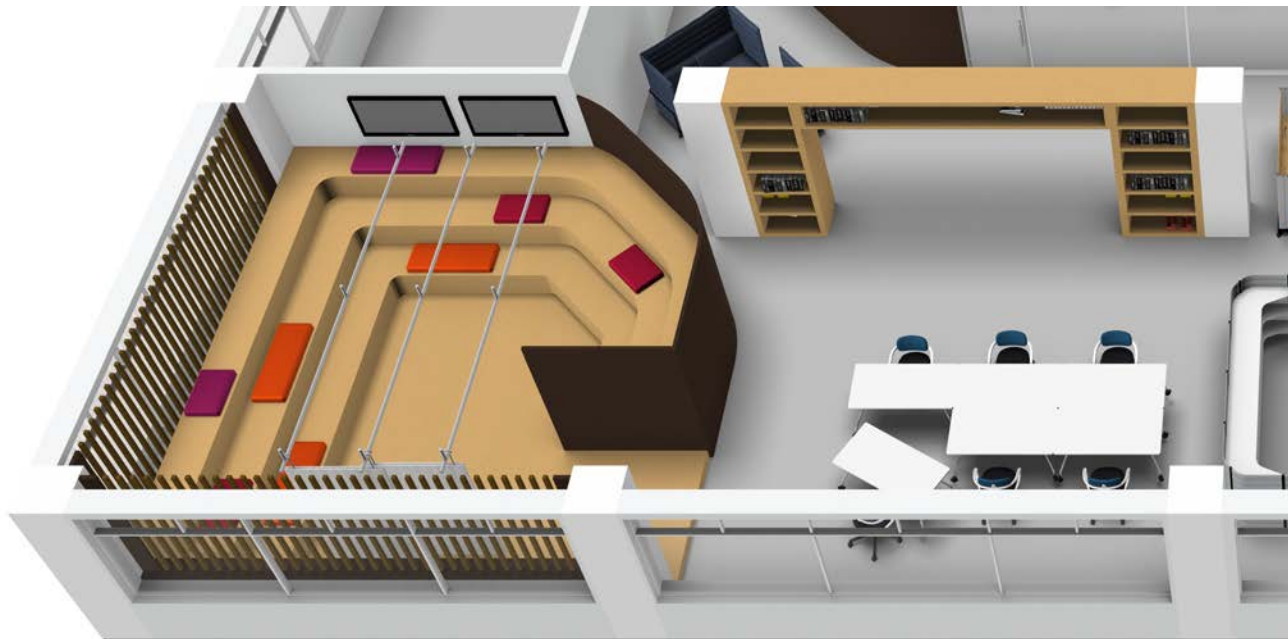
# Concept C

war room / kitchen



# Concept C

town hall



# Concept C

wardrobe with view into gym



# Concept C

lab / entrance / lounge / library



# Concept C

key product:

HACK



# Hack

## Konstantin Grcic

Designed by Konstantin Grcic, Hack is a table system that anticipates the requirements of companies and employees – a provocative solution which can be understood as a 'hack' of the office environment. Grcic counters traditional desks with an innovative functional and aesthetic approach that satisfies the demands of today's high-tech companies. With its raw wooden panels, Hack presents an unfinished aesthetic at first glance, like a snapshot of an experimental project under development. The system reflects the attitude of companies that similarly define themselves in terms of constant change.

Hack has a simple, sturdy design, which is stripped down to the essentials. The solid hinges connecting the three wooden panels are precisely tooled parts made of anodised aluminium. These facilitate the ingenious folding function of Hack and simultaneously ensure its stability.



# Hack



# Hack



# Hack on Castors

Not foldable



with anti-fold-lock

# Concept C

key product:

**MULTI LANE**

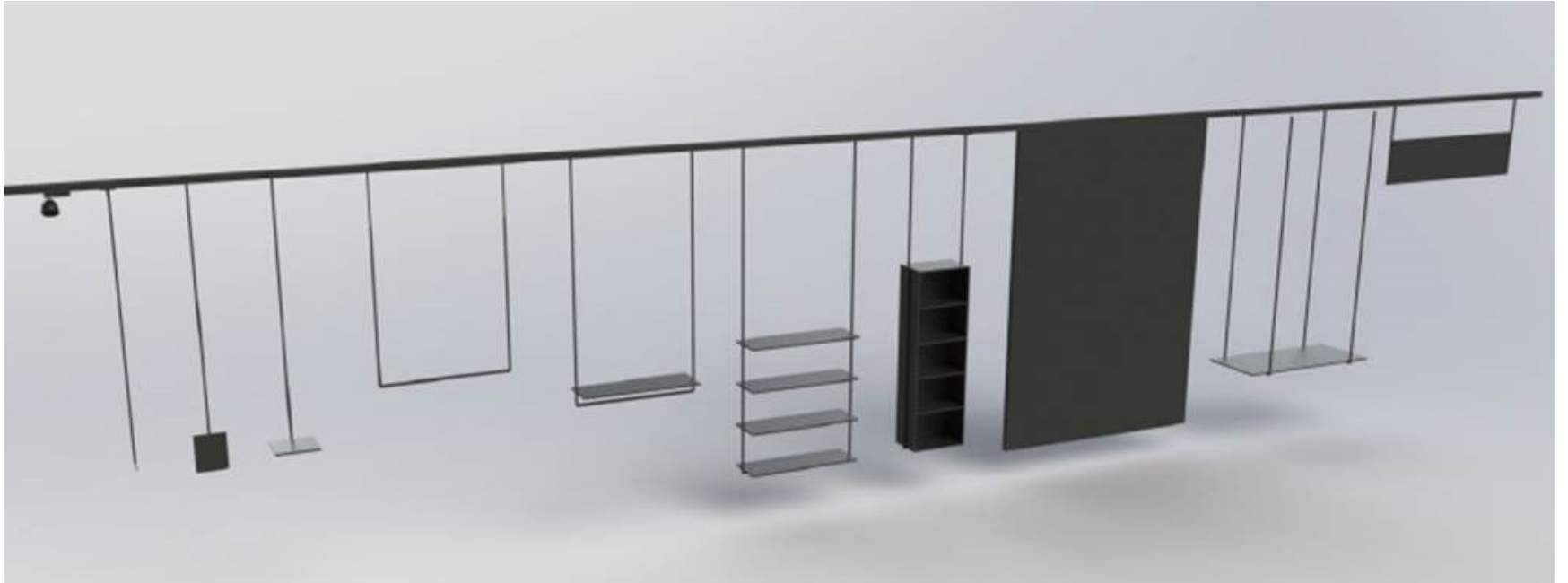


# Multi-Lane

## Vitra Retail

Global trends such as urbanisation, networking, digitalisation or new work scenarios are changing the demands on architecture and space. The experiences that are becoming available in the retail sector through quickly changing curated shopping, pop-up stores or fashiontainment extend to the workplace. Creative work, in privacy or in an open space for spontaneous project-related teamwork, requires flexible spaces, variety and room for individuality. The Multi-Lane is the simple yet effective solution for this challenge: it is designed as an electrified ceiling rail from which merchandise fixtures, room separators or lights can be suspended to create ever new spatial scenarios.

# Multi-Lane

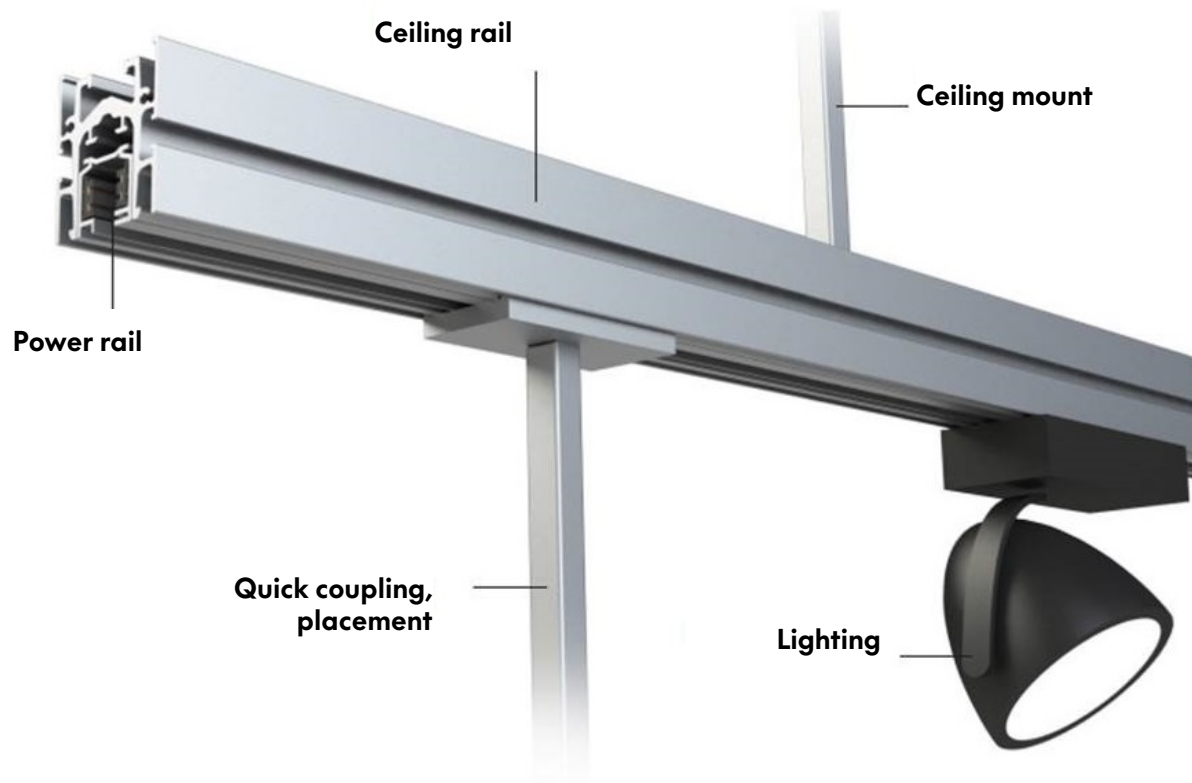






**Multi-Lane creates flexibel and individual areas of application e.g. project areas and workshop areas.**





Flexible use: goods holders, room dividers or lightning can be mounted on the Multi-Lane



Lock lever to fix fitting!



# Multi-Lane

